



# BLACKSHAW

DEVELOPMENT & INTERIOR DESIGN

*[www.blackshaw.es](http://www.blackshaw.es)*

# THE BLACKSHAW EXPERIENCE

*Turning visions into lifestyles*

The ascent of the Blackshaw Group to a leading position in the exclusive upmarket property sector is a story of remarkable growth, innovation, and visionary leadership. At the heart of this success is CEO, Sally Blackshaw, whose boundless energy, entrepreneurial flair, and sharp design acumen have been refined through more than twenty years of experience in the luxury property development sector in Southern Spain. Under Sally's progressive stewardship, their deep understanding of the Marbella luxury property market ensures that the Group provides a uniquely integrated approach to setting new standards of excellence in the industry.



# SERVICES OFFERED BY BLACKSHAW GROUP

---

## *Luxury Real Estate Brokerage*

We connect investors with prime properties, offering strong returns through development within the Blackshaw Group. After renovation, we reintroduce these properties to the market, handling every aspect of the resale process from marketing to open houses, ensuring a seamless transition from development to market success.

## *Bespoke Interior Design*

This service is dedicated to transforming spaces into breathtaking homes that mirror the individuality, lifestyle and aesthetic of each client. This design philosophy focuses on crafting environments that not only exude luxury but also provide comfort and functionality, tailored to the client's specific desires.

## *Property Investment and Development*

With a keen eye for potential and a profound knowledge of market dynamics, we assist investors in identifying opportunities that promise substantial returns. Through considered renovation and insightful market positioning, Blackshaw Group plays a crucial role in maximising investor clients' capital.

## *Project Management and Renovation*

Overseeing renovations from initial ideas through to completion, ensuring a seamless and efficient process. Our successful track record demonstrates a deep understanding of how to achieve the highest standards of quality and design to align perfectly with the project's guiding concept.

# Meet the TEAM





BLACKSHAW PROJECTS

# A CHIC GOLDEN MILE SANCTUARY

The villa's renovation is a classic hallmark of Blackshaw's portfolio, involving a thorough overhaul that not only updates essential systems like electrics and plumbing but also reinvents the space down to the finest details, creating a brand-new home from the ground up.

*Blackshaw Projects*





*Luxurious yet comfortable family home*

Blackshaw's design philosophy shines in the villa's transformation into a contemporary masterpiece that balances striking modernity with the warmth and functionality of a family home. The interiors are accessorised with brands, known for their impeccable craftsmanship and enduring style, ensuring that each space not only meets the highest standards of luxury but also embodies a timeless elegance.

*Blackshaw Projects*





## *Modern Colour Scheme*

The sophisticated colour scheme throughout the interiors features warm, organic tones, accented by strategic uses of colour that add depth and character. Meanwhile, the importance of lighting is a fundamental design element, with large doors and windows inviting natural light to flood the interiors, complemented by carefully selected designer light fixtures and subtle recessed lighting that together create a captivating ambience.

*Blackshaw Projects*





## *Outdoor Area*

The outdoor area is as important as the interior, designed with the owner's love for entertaining family and friends in mind. It features a landscaped garden, a pool with an adjacent jacuzzi, and a sunken seating area that beckons guests to relax and enjoy their surroundings. The outdoor kitchen and barbecue area are perfect for gatherings, further blurring the lines between the indoor and outdoor living areas.

*Blackshaw Projects*







# ELEGANT FAMILY TOWNHOUSE

Elegant and contemporary, this 3 storey townhouse has 4 bedrooms, all with ensuite bathrooms and underfloor heating. On the ground floor you will find an open plan kitchen, a cloak room and a guest toilet. You will also find a spacious living room with direct access to the private terrace and garden. On the first floor you have 2 bedrooms, both with ensuite bathrooms. The master bedroom has a spacious terrace with breathtaking views to wake up to, as you can see them from your bed.

*Blackshaw Projects*





*Best of the town & nature*  
On the second floor we have another 2 bedrooms, both with ensuite bathrooms and private terraces from which you can also enjoy the stunning views. It is ideal as a home for a family who seeks to be close to the city, but still enjoy the relaxing environment of Mediterranean nature.

*Blackshaw Projects*

*The views of La  
Concha mountain and  
Mediterranean Sea  
will delight you as  
much as the silence  
surrounding the house.*











As seen in the **Wall Street Journal**

*Click [here](#) to read the article*

# MODERN VILLA IN SIERRA BLANCA

This luxurious property boasts five spacious bedrooms, offering ample space for a comfortable and stylish living experience. Designed by our expert team with contemporary elegance in mind, the villa features sleek and clean lines, complemented by large windows that fill the rooms with natural light and offer breathtaking views of the surrounding landscape.

*Blackshaw Projects*





## *A haven of tranquility*

The outdoor living is totally impressive, with a large pool and multiple seating areas with different outdoor furniture designs and where you can relax and enjoy the Mediterranean sun. We thoughtfully designed to provide a private retreat, with en-suite bathrooms and generous closet space. The master suite, in particular, exudes luxury, featuring a spacious layout, a private terrace, and a lavish bathroom with modern fixtures and finishes.

*Blackshaw Projects*

*Designed with elegance in mind*

Upon entering the villa, you are greeted by a grand hall that leads to an open-plan living and dining area, creating a seamless flow throughout the main living space. The kitchen is a chef's dream, equipped with high-end appliances and a elegant design, perfect for both daily living and entertaining guests.

*Blackshaw Projects*















# MAGAZINE FEATURES

# DORMITORIOS CON VESTIDOR

Más allá de su funcionalidad, las escaleras marcan el estilo de la casa. Sácales partido con estas ideas decorativas y prácticas



**MUEBLERÍA**  
Sofía de Ascensión  
Latorre. Proyecto  
de Maucha Mae  
Ascensión Latorre,  
Fra Maé Mará.

## UN RÚSTICO LIGERO

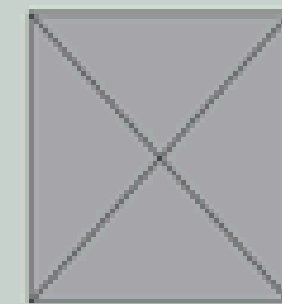
Madera y piedra. Es la combinación de materiales que se impone en este baño proyectado por la decoradora Emma Arezana. "Buscábamos lograrlo, con esta piedra darle un look atemporal, que se vea logrado, con esta piedra actual hoy y dentro de diez años. Y nos fijamos con los materiales para lograrlo, con esta piedra caliza con una peca de madera de roble teñido", apunta.

Un detalle con trazo. La decoradora lo ideó para ocultar los sanitarios, y así evitar que fueran lo primero que uno viese al abrir la puerta. El espejo, con marco metálico en acabado zinc, suma carácter y los apliques, de estilo clásico, refuerzan el buscado look atemporal del baño.



### AL DETALLE

Proyecto:  
Emma Arezana.  
Encimera de madera  
(unos 450€), Griferías  
de Cristina (338€) y  
lavamanos (174€) de  
Roca. Espejo (200€) y  
apliques (unos 10€),  
diseñados por la  
decoradora.



*As seen in*  
**EL MUEBLE**

*Read the full article*

As seen in  
**ESSENTIAL  
MAGAZINE**

“In Marbella’s rarefied world of upmarket interior design, the Blackshaw Group has a reputation for quality, creativity, and attention to detail that is renowned throughout the luxury property development sector.”

[Read the full article](#)



*In Marbella’s rarefied world of upmarket interior design, the Blackshaw Group has a reputation for quality, creativity, and attention to detail that is renowned throughout the luxury property development sector.*

**DESIGN EXPERTISE**  
Known for their precise approach and unparalleled design flair, Sally Blackshaw and her talented team have become synonymous with excellence, as demonstrated by our recent encounter with one of Sally’s delighted clients.

When the property owner first encountered this villa just off the Golden Mile, he was not convinced it had the prerequisites he was seeking: to make it a comfortable family home, which nevertheless would deliver the luxury lifestyle he sought.

Initial doubts were quickly dispelled, however, after viewing Sally’s transformative

work on a nearby residence, leading to an enthusiastic commitment to the project.

“We were immediately impressed by the high quality of work. Our journey with the Blackshaw Group, led by Sally and her talented team, began with a recommendation from Marbella’s luxury property specialists Panorama Real Estate,” states the owner.

“From our initial meeting, it was evident that Sally’s approach was different. Her thoroughness in defining the project’s brief and understanding how the envisioned outcome would integrate with our lifestyle was both impressive and reassuring.” >

# THE BLACKSHAW TOUCH AT FINCA CORTESIN

WORDS MICHEL CRUZ PHOTOGRAPHY KEVIN HORN



Retro loungers with a soft olive green tone inspired by the surroundings



The Blackshaw Interior Design team putting the final touches to the project

*If you're familiar with the Finca Cortesin resort you will know it stands out for quality, service and attention to detail. It's why this hotel, with its spa and championship golf course, is rated among the top in its class in Spain and indeed Europe, and what attracts events such as the 2023 Solheim Cup. This sense of perfectionism also extends to the private residences that form part of this country club, and to be instructed to decorate a home there is a feather in any interior designer's cap. Sally Blackshaw and her team at Blackshaw Interior Design rose to the occasion.*

**“**It was an honour and a pleasure for us to be asked to design the interior of this luxurious garden apartment at Finca Cortesin,” says Sally Blackshaw, who founded the highly successful and well-respected interior design studio that bears her name. “In recent years, a great deal of our work has been focused upon renovating or even redeveloping properties, especially villas, on behalf of owners and investors, so it was exciting to work on a furnishing concept for this project.”

*As seen in*  
**ESSENTIAL  
 MAGAZINE**

“Skilled design work matched by quality craftsmanship are vital for a successful, stand-out project where everything looks amazing and fits beautifully together, and that is one of our core strengths.”

[Read the full article](#)

*As seen in*

# ESSENTIAL MAGAZINE

“It’s an efficient, effective process and we’re very familiar with the practical and business sides of development, but we stand out by offering bespoke quality and added value, in addition to taking away stress from owners/investors and managing the project for them.”

*Read the full article*



**LIFESTYLE** homes ↗ back to **CONTENTS**

Villa Aura now – a beautifully renovated modern home

## LAS BRISAS

### VILLA RENOVATION BY BLACKSHAW INTERIOR DESIGN

Sally Blackshaw has made a name for herself not only as a skilled interior designer, but also as a specialist in modernising and developing older properties in prime Marbella locations such as Las Brisas. WORDS MICHEL CRUZ

PHOTOGRAPHY COURTESY OF **BLACKSHAW INTERIOR DESIGN**

150 / JUNE 2022 **ESSENTIAL** MAGAZINE

**A**mong the large portfolio of interior design projects created by Sally Blackshaw in villas, penthouses, apartments and also commercial venues across the greater Marbella area over the past years, is also an important and growing collection of beautifully styled large-scale building projects, often consisting of older properties, usually in the finest frontline golf and beachfront or country club locations the region has to offer.

Sally has never shied away from large projects, focusing early on not just on interior design but also entire renovation and rebuilding projects. “I love the process and have built up a great deal of experience in it,” says Sally, who works with a consolidated team of highly skilled and creative collaborators, ranging from builders, technical engineers and architects to landscapers, lighting and home automation experts, technicians and craftsmen who make bespoke furnishings and help her to create beautiful, made-to-measure solutions for one-off homes of distinction. >



# ADDING A HOMELY TOUCH TO A MODERN BUILD BY BLACKSHAW

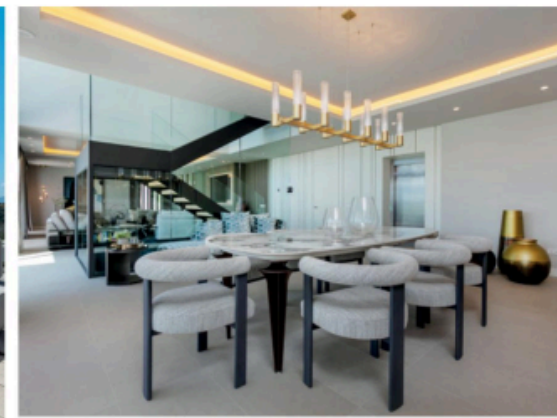
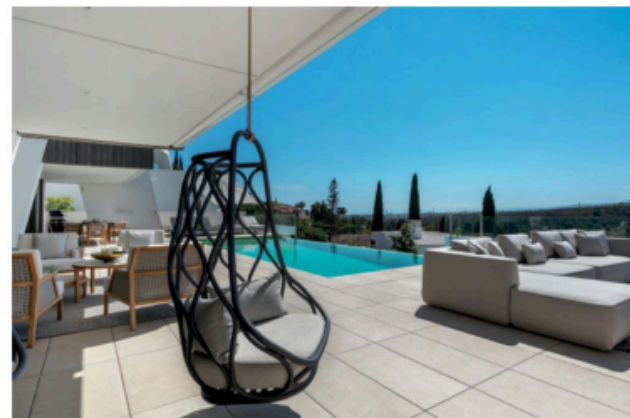
*This luxurious property in Marbella Sierra Blanca showcases five spacious bedrooms, offering ample space for a comfortable and stylish living experience. Styled by Blackshaw's expert team with contemporary sophistication, the team's initial visit highlighted the villas features of linear architectural lines. Upon conclusion of the concept meeting, the main design visions was accentuating the grand windows that would fill the rooms with natural light and offer breathtaking views of the surrounding landscape.*

PHOTOGRAPHY COURTESY OF BLACKSHAW INTERIOR DESIGN



Upon entering the villa, the lighting installation exudes opulence, establishing a standard of luxury that defines this residence. The magnificent grand hall frames breathtaking mountain and ocean views, bathed in an abundance of natural light. The new open plan living area, thoughtfully designed, allows for a seamless flow of light throughout. The kitchen provides

a haven for any private chef's wildest imagination, equipped with high-end appliances and an elegant layout. The Blackshaw team has dedicated its attention to crafting the ideal space for daily living and entertaining. Every intricate detail, from state-of-the-art technology to meticulously selected materials, exemplifies the utmost commitment to exceptional design and furnishing. >



*As seen in*  
**ESSENTIAL  
MAGAZINE**

“Upon conclusion of the concept meeting, the main design vision was accentuating the grand windows that would fill the rooms with natural light and offer breathtaking views of the surrounding landscape.”

*Read the full article*